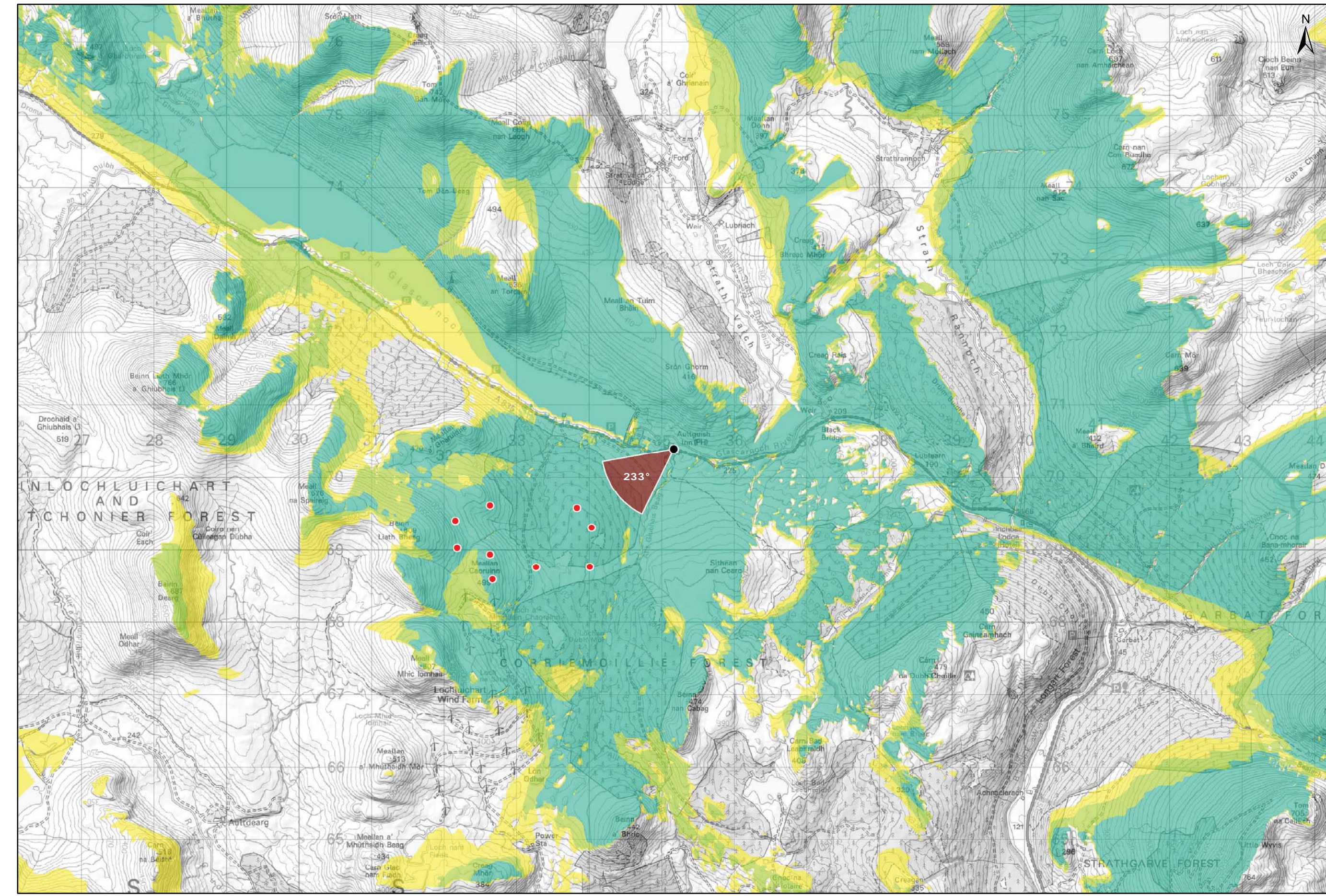


Viewpoint Location Plan Baseline Panorama  
Scale: 1:150,000



Viewpoint Location Plan  
Scale: 1:50,000 (Blade Tip ZTV)

**Note:**  
1. ZTV: Created using ESRI ArcGIS 10.5 software using the following data and parameters:  
Blade tip height: 133m  
DTM Data: OS Terrain 5 DTM. Resampled to a 10m grid.  
Observer height: 2m  
No surface features, such as buildings or trees, were included in the analysis.  
Earth curvature and light refraction has been included in calculations.

- Legend:**
- Proposed Turbines
  - Viewpoint Location
  - 90° Field of View Viewpoint
  - 53.5° Field of View Viewpoint

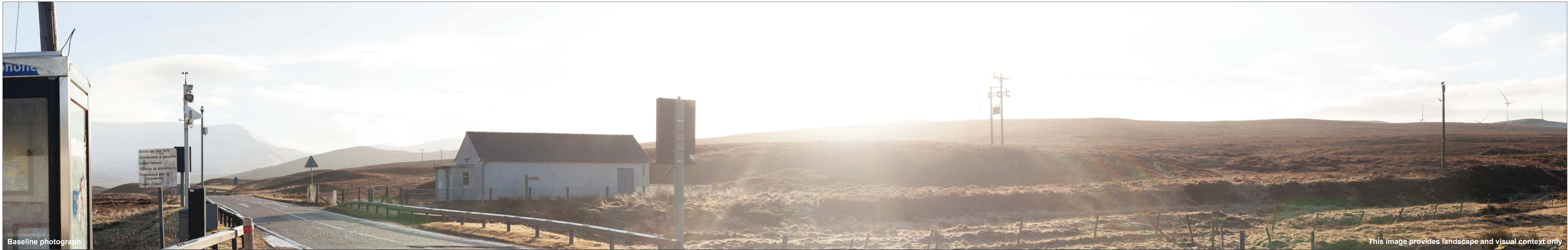
- Cumulative Wind Turbines
- Wind Farm Status (01/10/2018)**
- Wind Farm Status (01/10/2018)
  - Wind Farm Status (01/10/2018)
  - Wind Farm Status (01/10/2018)
- Wind Farm Status (01/10/2018)**
- Operational; Under Construction
- Zone of Theoretical Visibility**
- No. of Turbines (133m) Visible**
- 1 - 3
  - 4 - 6
  - 7 - 9

Blade Tip:	133m
DTM:	OS T5
DTM resolution:	5m
Observer height:	2m
Surface features:	Excluded
Earth curvature:	Included

<b>Title:</b> Figure 9.21a Viewpoint 1: A835 Aultgish Inn	
Lochluichart Wind Farm Extension II	
<b>Source:</b> © Crown copyright and database rights (2016) OS (license No 0100031673)	
<b>Client:</b> Infinergy	
<b>Drawn by:</b> MJF	<b>Checked:</b> JW
<b>Date:</b> 15/10/2018	<b>Figure:</b> 9.21a
<b>Scale:</b>	<b>Revision No:</b> B

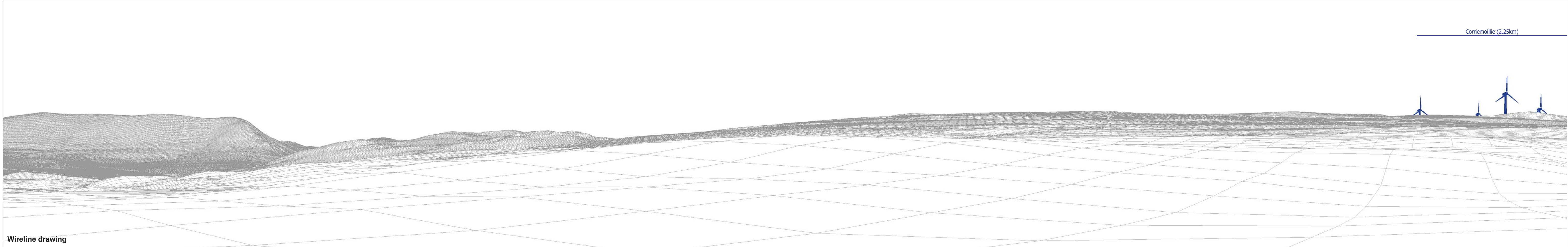






Baseline photograph

This image provides landscape and visual context only



Wireline drawing

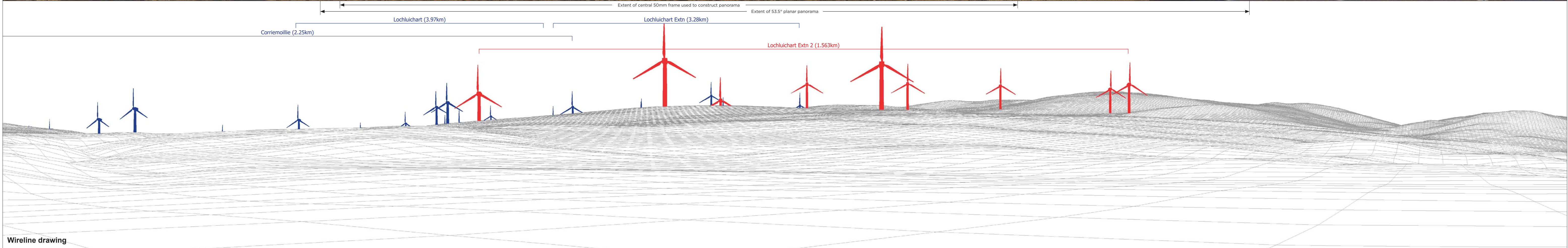
OS reference: 235166 E 870394 N  
 Eye level: 228.98 m AOD  
 Direction of view: 143°  
 Nearest turbine: 1.563 km

Horizontal field of view: 90° (cylindrical projection)  
 Principal distance: 522 mm

Camera: Canon EOS 5D Mark II  
 Lens: 50mm (Canon EF 50mm f/1.4)  
 Camera height: 1.5 m AGL  
 Date and time: 04/02/18, 10:02

Figure: 9.21b  
 Viewpoint 1: Aultguish Inn





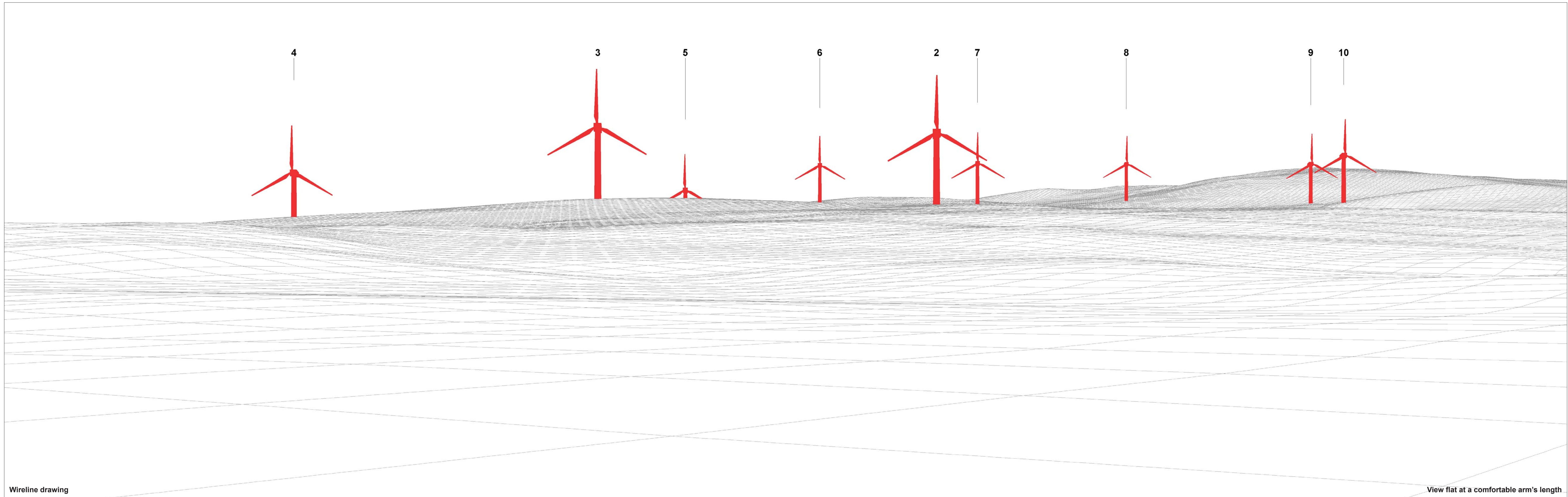
OS reference: 235166 E 870394 N  
 Eye level: 228.98 m AOD  
 Direction of view: 233°  
 Nearest turbine: 1.563 km

Horizontal field of view: 90° (cylindrical projection)  
 Principal distance: 522 mm

Camera: Canon EOS 5D Mark II  
 Lens: 50mm (Canon EF 50mm f/1.4)  
 Camera height: 1.5 m AGL  
 Date and time: 04/02/18, 10:02

Figure: 9.21c  
 Viewpoint 1: Aultguish Inn





Wireline drawing

View flat at a comfortable arm's length

OS reference: 235166 E 870394 N  
 Eye level: 228.98 m AOD  
 Direction of view: 233°  
 Nearest turbine: 1.563 km

Horizontal field of view: 53.5° (planar projection)  
 Principal distance: 812.5 mm  
 Paper size: 841 x 297 mm (half A1)  
 Correct printed image size: 820 x 260 mm

Camera: Canon EOS 5D Mark II  
 Lens: 50mm (Canon EF 50mm f/1.4)  
 Camera height: 1.5 m AGL  
 Date and time: 04/02/18, 10:02

Figure: 9.21d  
 Viewpoint 1: Aultguish Inn





Photomontage

View flat at a comfortable arm's length

<b>OS reference:</b> 235166 E 870394 N	<b>Horizontal field of view:</b> 53.5° (planar projection)	<b>Camera:</b> Canon EOS 5D Mark II	
<b>Eye level:</b> 228.98 m AOD	<b>Principal distance:</b> 812.5 mm	<b>Lens:</b> 50mm (Canon EF 50mm f/1.4)	
<b>Direction of view:</b> 233°	<b>Paper size:</b> 841 x 297 mm (half A1)	<b>Camera height:</b> 1.5 m AGL	
<b>Nearest turbine:</b> 1.563 km	<b>Correct printed image size:</b> 820 x 260 mm	<b>Date and time:</b> 04/02/18, 10:02	<b>Figure: 9.21e</b> <b>Viewpoint 1: Aultguish Inn</b>